



# GAT MONTHLY MEMBERSHIP PROGRESS REPORT

Results as of: 4/30/2023

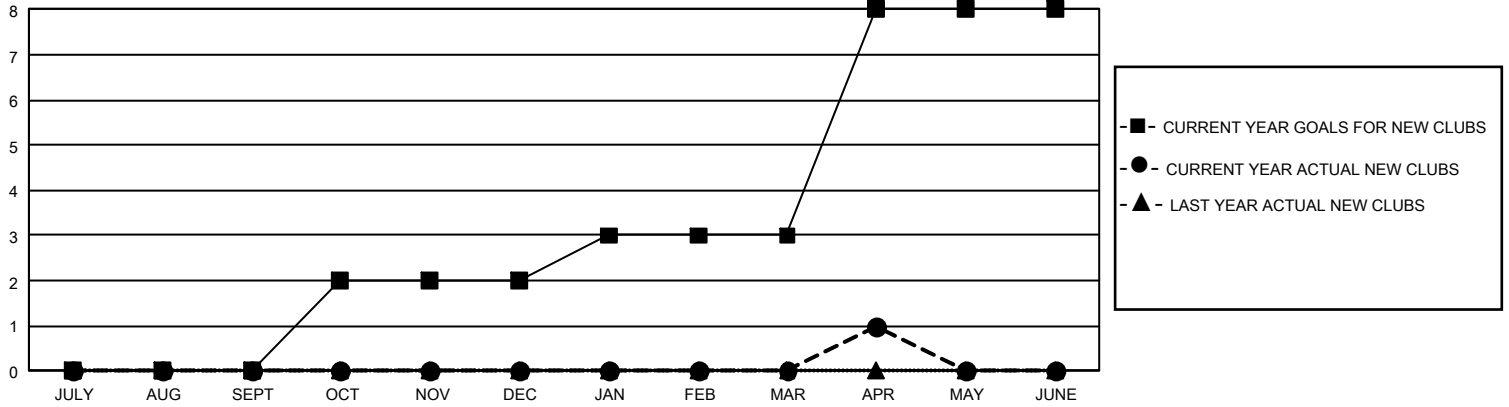
## GMT Constitutional Area 2, Group D

REPORT DOES NOT INCLUDE CLUBS IN UNDISTRICTED AREAS.

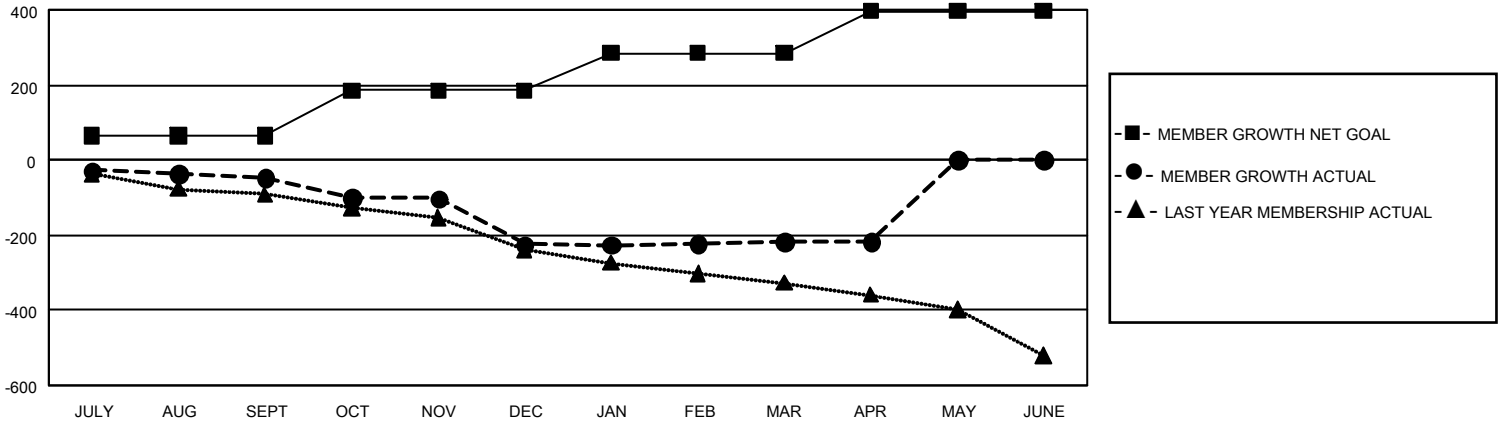
Clubs			
RESULTS FOR 2022-2023			
QUARTER	NEW CLUB GOAL	NEW CLUBS	DROPPED CLUBS
JULY/AUG/SEPT	0	0	1
OCT/NOV/DEC	6	0	1
JAN/FEB/MAR	3	0	2
APR/MAY/JUNE	15	1	1

Members			
RESULTS FOR 2022-2023			
QUARTER	MEMBER GROWTH NET GOAL	MEMBER GROWTH ACTUAL	DROPPED MEMBERS ACTUAL (including transfers)
JULY/AUG/SEPT	65	131	148
OCT/NOV/DEC	120	182	325
JAN/FEB/MAR	100	172	156
APR/MAY/JUNE	111	114	88

GOALS AND ACTUAL NEW CLUBS CUMULATIVE



GOALS AND ACTUAL MEMBERS CUMULATIVE



<b>DROPPED CLUBS: 5</b>	158 CLUBS OF 353 ADDED 1 OR MORE NEW MEMBERS	<b><u>GENDER DISTRIBUTION</u></b>	
		MALE 4,673 (70.47%) FEMALE 1,958 (29.53%) NON BINARY 0 (0.00%) PREFER NOT TO ANSWER 0 (0.00%)	
<b><u>DROPPED MEMBERS</u></b>		<a href="#">CLICK HERE FOR CUMULATIVE MEMBERSHIP DATA</a>	
DECEASED 95 CLUB CANCELLED 41 OTHER 581 <b>TOTAL 717</b>		TOTAL FAMILY UNIT MEMBERS 1,161 FAMILY MEMBERS PAYING HALF DUES 588	